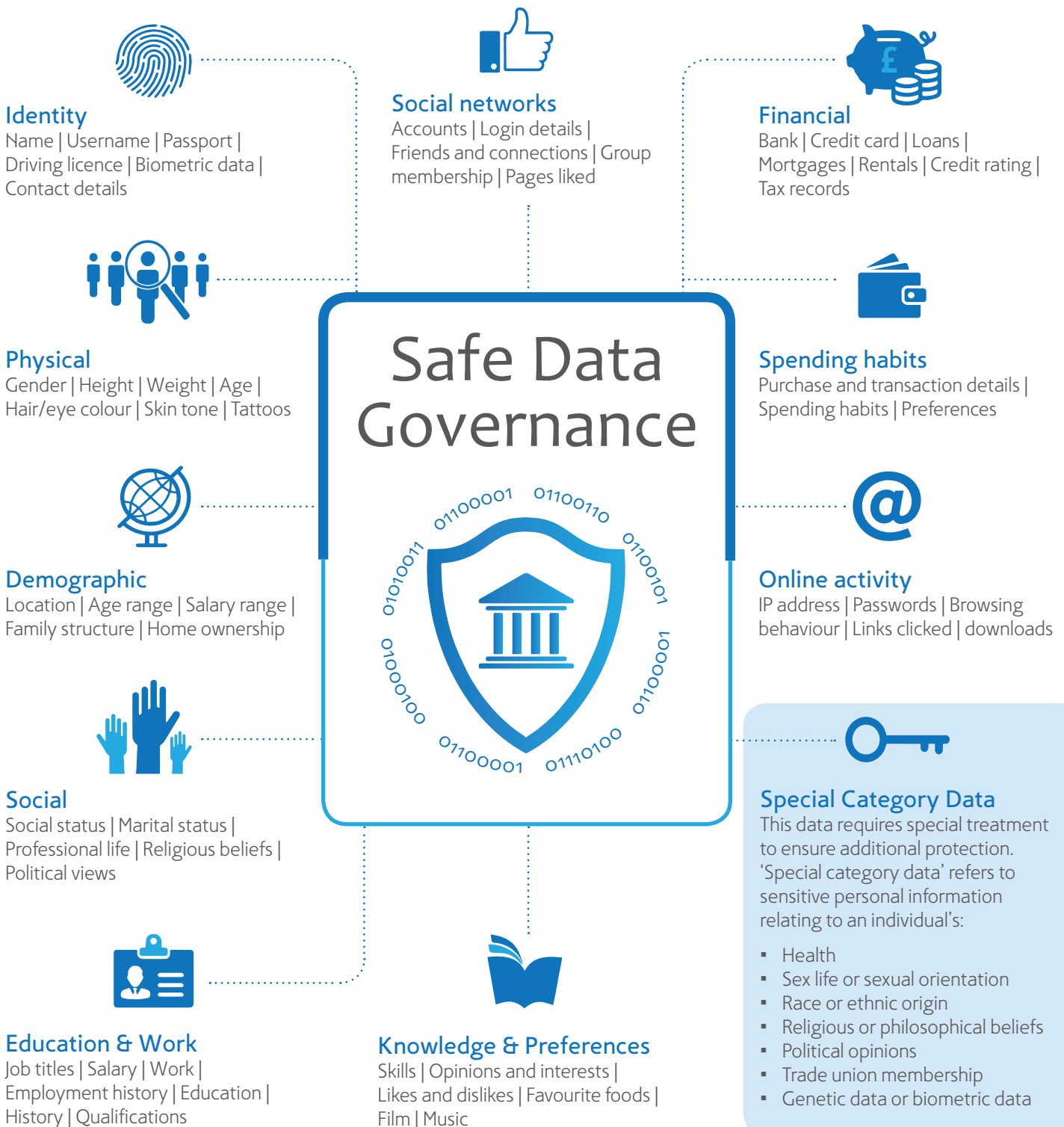


Personal Data Identifiers

The GDPR applies to 'personal data' meaning any information relating to an individual who can be directly, or indirectly, identified by reference to an identifier.

This infographic shows examples of the variety and types of identifiers that are subject to GDPR. Please note that this list of Personal Data should not be taken as limited to the categories and examples shown below.



Safe Data Governance

Our GDPR Compliance Platform offers a practical approach to data privacy. Manage compliance from an easy to access, central location with an integrated software solution.

www.safedatagov.com